

PENDRY

RESIDENCES

BY MONTAGE HOTELS & RESORTS

West Hollywood

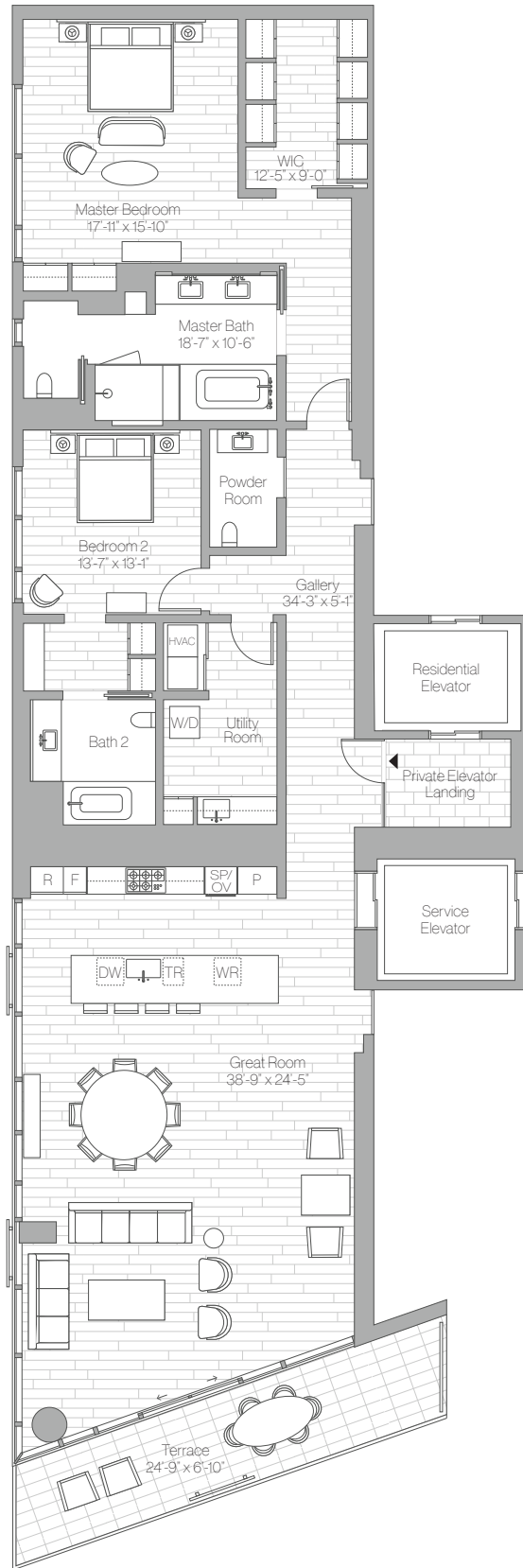
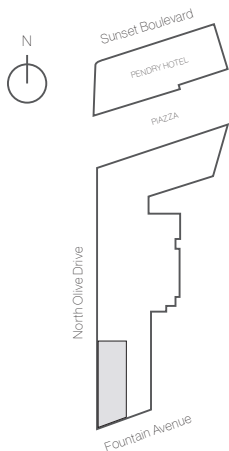
Residence 208

2 Bedrooms, 2 Baths, Powder Room

Interior: 2,726 sq ft

Exterior: 233 sq ft

Total: 2,959 sq ft



Montage Residences Real Estate

+1310.849.0202

info@pendryresidencesweho.com

pendryresidencesweho.com

The project described herein (the "Project") and the residential units located within the Project (the "Residential Units") are not owned, developed, or sold by KT Intellectual Property Holding Company, LLC (KT IP), or Montage Hotels & Resorts, LLC (Montage) (collectively, "Licensors") and Licensors do not make any representations, warranties or guarantees whatsoever with respect to the Residential Units, the Project or any part thereof.

Sunset Subsidiary LLC uses the PENDRY, MONTAGE, and MONTAGE RESIDENCES REAL ESTATE brand names and certain other KT IP and Montage trademarks (collectively, the "Trademarks") in connection with the sales and marketing of the Residential Units in the Project under limited, non-exclusive and non-sublicensable licenses from Licensors. The foregoing licenses may be terminated or may expire without renewal, in which case neither the Residential Units nor any part of the Project will be identified as a PENDRY-branded project or a MONTAGE-branded project or have any rights to use the Trademarks.

This does not constitute an offer to sell or a solicitation of an offer to buy a unit. Nor is it an offering or solicitation of sale of condominium units in any jurisdiction where registration is required to offer real estate unless we have met such requirements. We will not knowingly disseminate any information regarding the condominium where such offering or solicitation would otherwise be prohibited by law. Obtain all disclosure documents required by applicable laws and read them before signing anything. No governmental agency has judged the merits or value, if any, of the development. Further, ownership of a condominium unit in the development will be subject to the terms of various documents relating to the development which include membership in a condominium association and the obligation to pay various assessments. The project described herein (the "Project") and the residential units located within the Project (the "Residential Units") are not owned, developed, or sold by KT Intellectual Property Holding Company, LLC (KT IP) or Montage Hotels & Resorts, LLC (Montage) (collectively, "Licensors") and Licensors do not make any representations, warranties or guarantees whatsoever with respect to the Residential Units, the Project or any part thereof. Sunset Subsidiary LLC uses the PENDRY and MONTAGE brand names and certain other KT IP and Montage trademarks (collectively, the "Trademarks") in connection with the sales and marketing of the Residential Units in the Project under limited, non-exclusive and non-sublicensable licenses from Licensors.

The final shape, design, and square footage of Buyer's Unit are subject to constructed measurements. All dimensions are approximate and subject to construction variances and differing measuring techniques. Plans and dimensions for similar units may contain minor variations from floor to floor. All floor plans and floor plan elements such as room sizes, casework, other fixtures and furniture are not drawn to scale, may not be included in every unit with that floor plan and are shown for illustrative purposes only. Seller reserves the right to make changes and modifications to plans, materials, specifications, features and delivery of home without notice or obligation.

Montage Residences Real Estate, NY Residents: THE COMPLETE OFFERING TERMS ARE IN A CPS-12 APPLICATION AVAILABLE FROM THE OFFEROR, FILE NO. CP19-0068. This Condominium has been registered with the Massachusetts Board of Registration of Real Estate Brokers and Salespersons F-1269-01-01. This Condominium is exempt from the registration requirements in Colorado, New Jersey and Utah. WARNING: THE CALIFORNIA DEPARTMENT OF REAL ESTATE HAS NOT INSPECTED, EXAMINED, OR QUALIFIED THIS OFFERING. CalDRE# 0121140.