

ART COLLECTION

PENDRY
WEST HOLLYWOOD

PENDRY WEST HOLLYWOOD ART COLLECTION

pg 3

HOTEL SALES CONTACT

Karen Dailey

Director of Sales & Marketing
karen.dailey@pendry.com

MEDIA CONTACT

Kacey Bruno

Montage International
kacey.bruno@montage.com

PENDRY WEST HOLLYWOOD

pendry.com/west-hollywood
pendryresidencesweho.com
@pendrywesthollywood

8430 Sunset Blvd
West Hollywood, CA 90069
310 928 9000

Situated in the heart of the iconic Sunset Strip at the intersection of Sunset Boulevard and Olive Drive, Pendry West Hollywood is a commanding presence. Home to some of the most iconic cultural landmarks in the country, the hotel and residences are right at home with an elevated environment that feels rooted in the neighborhood, while redefining modern-day hotel design and urban living. With captivating views from the Hollywood Hills to Downtown Los Angeles, Pendry West Hollywood features 149 luxury guest rooms, including 37 suites and 40 Pendry Residences. Guests have exclusive access to hotel amenities including a rooftop pool and bar, multiple chef-driven restaurants and bars created by the legendary Wolfgang Puck, multi-purpose live entertainment venue, screening room, bowling alley, Spa Pendry, state-of-the-art fitness center and curated art collection.

Pendry West Hollywood brings a captivating in-house art collection to L.A., curated by Lendrum Fine Art, featuring local L.A. artists alongside internationally acclaimed names. The collection celebrates California's quintessential laid back California glamour by many of the "who's who" of modern art, displayed throughout the hotel's common areas, guest rooms, Pendry Residences and The Britely private membership club, welcoming guests with a multi-sensory experience around every corner. The art has been selected to provide guests with unique and unexpected opportunities to enjoy an artistic experience in a luxurious and sophisticated, yet casual environment—the epitome of new luxury. The hotel's crown jewel is just that — the Sunset Jewel — a fanciful golden tree sculpture adorned with Swarovski crystals custom created by the brands artists and artisans for Pendry West Hollywood, and visible to Sunset Strip revelers, providing a stunning first impression.



Andy Cao and Xavier Perrot

Sunset Jewel

Cao is based in Los Angeles and Perrot based in Paris

Piazza

Cao Perrot's work invites viewers into a dream environment. For Cao and Perrot, the ultimate luxury is to be immersed in the presence of light and silence. For Pendry West Hollywood, Cao Perrot has created Sunset Jewel, a fanciful golden tree sculpture rising from a clipped Santolina hedge. The tree twists and turns reaching a height of twenty-three feet. A split trunk reveals a glistening geode dense with black Swarovski crystals. Extending branches hold a canopy with thousands of shimmering mother of pearl leaves. Each leaf is adorned with a single sparkling crystal from Swarovski elements.



Anthony James
70' Icosahedron
British/American artist based in Los Angeles
Level 1

LOBBY

pg 7

Anthony James is a sculptor, painter, and performance artist famous for setting fire to a Ferrari in a birch forest and entombing the ravaged car and trees in an installation called _K0_ (2008). He is known for monumental and performative sculptures and installations. His practice incorporates a variety of industrial objects, steel vitrines, aluminum sculptures, detritus, and wall-mounted installations, his use of vitrines drawing comparisons to Damien Hirst and Jeff Koons. James is fixated with speed, mechanization, and the search for new practices to reflect themes of death, destruction, and rebirth.

COMMON AREAS INTERIOR ARTWORK



KATSU

Lives and works between Brooklyn, NY
and San Francisco, CA

Level 1

KATSU is a modern day graffiti legend – his work is overtly in-your-face and unavoidable. Emerging in NYC during the 1990s, the subversive energy driving his work has granted him notoriety – or fame tokens – among the graffiti and street art world. KATSU’s drone paintings are the 21st Century’s Action Paintings, residing at an intersection of gesture and loss of control. His paintings are created in a symbiotic gestural application of atomized enamel paint sprayed by a remotely controlled customized quadcopter drone onto an acrylic coated canvas. The drone is a semi-autonomous collaborator. Drones are voyeurs and recorders, used to exploit access and proximity as image-gathering devices. In KATSU’s practice, the drone’s purpose is subverted; it is an image creator.

COMMON AREAS INTERIOR ARTWORK



Tessa Forrest

Lives and works in New York City

Level 1

pg 11

Tessa Forrest is a graphic designer & art director in New York City. Previously in-house at Outdoor Voices, she is now an independent designer and runs a project named @subliming.jpg.

COMMON AREAS INTERIOR ARTWORK



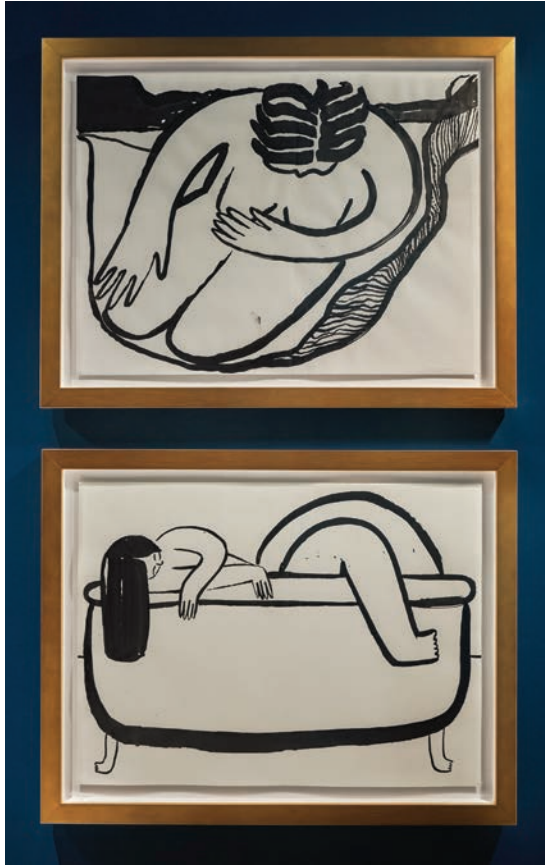
Megan Cotts
Lives and works in Los Angeles, CA
Level 1

COMMON AREAS INTERIOR ARTWORK

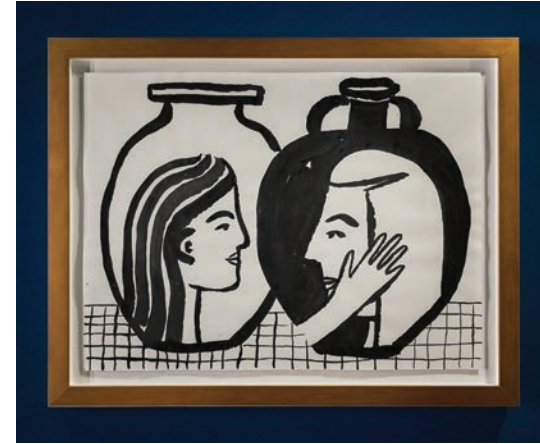
pg 13

Megan Cotts' sculptural paintings made of linen stretched over wood, painted with pigment formed from tempera and ground glass are situated between painting and sculpture. These works transverse the formal language of architectural minimalism, but are overtly bodily in a way that defies strict association with that language. Conceptually and formally, the work plays with ideas of transience and permanence, movement and stillness. Each piece is created to hang in any orientation, direction, or configuration, allowing the works to act independently, but also function in service to the space in which they are presented. The space becomes as significant as their internal coherence, with the inherent flexibility in how each is hung and displayed allowing them to be phonemes, becoming full phrases depending on the context and setting.

COMMON AREAS INTERIOR ARTWORK



Carrisa Potter
Lives and works in Oakland, CA
Level 1



Speaking both humorously and poignantly to the human condition, Carrisa Potter's work touches chords we all can relate to – exploring situations we've all experienced at some point in our lives and conveying messages we simply long to hear. Potter's most recent series of works exhibited in December 2018 touch on the human desire for New Year's expectations to come up with resolutions aimed at improvement – some kind of personal growth that is aimed at a much larger socio-political change. This aspiration for, and hopefulness of self-improvement and connectedness is powerful, and Potter exemplifies that in her works on paper.



Annelie Vandendael
Lives and works in Belgium
Level 1

Annelie Vandendael's photographs glorify the authenticity of female beauty through surreal compositions taken in analogue format. Inspired by the tendency of fashion photography to manipulate subjects and the human body, and believing this process of falsifying feminine beauty is extremely damaging, she seeks to represent real, authentic people, keeping intact their imperfections. Using women as the protagonists of her shots, not as an object to manipulate, but on the contrary as an integral part of nature – these luscious and surreal images allow for the authenticity of the body to speak for itself.



Hanibal Srouji

Lives and works between Paris, France and Beirut, Lebanon

Level 1

pg 19

Hanibal Srouji's works combines neon lights, fire and paint on canvas referencing the artist's childhood memories of Beirut in the 1960's and early 70's. At this time, neon signs lit the centers of the city. Beirut, for those who remember, was a major cultural and commercial center in the Middle East just before the outbreak of the civil war that put out its lights for more than 20 years. The open space in Hanibal Srouji's works refers directly to what he used to perceive as a child. Fog seems to continue to materialize and transform in an abundance of shape and form engulfing in his work as this open space... childhood memories are at the heart of his artistic production. These works are meant as signs of rebirth - light and color on burnt canvas – should the light shine again, despite difficult times. They hang, also, as a tribute to the hopeful rebirth movements that are taking place in the Arab world today.

COMMON AREAS INTERIOR ARTWORK



America Martin
Lives and works in Los Angeles, CA
Level 1

America Martin's art and personality encapsulates a sense of enthusiasm and hope. While born in the USA, the roots of America's Colombian heritage deeply penetrate her work. People are Martin's dominant subject. They are large in size, vivacious and accessible, and seem to burst out of the limits of each canvas or sculpture. Within this pulsating interplay of color, texture, line, and shapes, there is always America's signature expression that identifies each work as an America Martin. Martin is both a painter and a sculptor, with exceptional skill in rendering the human form in either medium.



Andy Woll
Lives and works in Los Angeles, CA
Level 1

Known for his chromatic paintings of Mt. Wilson, Woll takes cues from the practices of Modernist literary figures, most notably James Joyce, his painting process relies on a method comparable to automatic writing. Painting from overhead, he allows chance to create calls for formal logic, giving rise to a pictorial style at once rigorous and intuitive. Mt. Wilson's presence in relation to Los Angeles is that of a backdrop, an overarching image that recedes from the immediacy of quotidian exchanges happening within the city. The mountain becomes similarly diffuse in Woll's paintings—ubiquitous and iconic, at least to those living in Los Angeles, it is a subject to hang the act of painting on. For Woll, painting is an intuitive, associative act, in which he paints quickly after preparing a ground, developing each color palette according to themes in the music he listens to while working.



Bettina Hubby

Lives and works in Los Angeles, CA

Level 1

pg 25

Bettina Hubby's practice is wide-ranging, encompassing curatorial and project-based work as well as more traditional media such as collage, drawing, printmaking, sculpture and photography. Hubby's projects engage diverse communities and often exist in settings that challenge the conventions of exhibition spaces, celebrating collaboration and resisting easy categorization. While humor is what grounds her practice, she explores themes of ritual, construction, identity, community, and the constantly changing notion of self and other. In addition to her individual practice, Hubby is known for her extensive collaborative projects and curatorial work. Her most recent endeavor is Curatorial Hub, an online gallery of art with pop-up shows all over Los Angeles.

COMMON AREAS INTERIOR ARTWORK



Dafy Hagai

Lives and works between Tel Aviv, Israel and New York, NY

Level 2

Photographer Dafy Hagai's work deals with subjects such as female and beauty ideals, Israeli and local aesthetics and the connections between fashion, landscape and art. Drawn to real moments and places that evoke nostalgia, her predilection for a minimalistic, color oriented and graphic visual language permeate her work. One can similarly feel the simmering notion of female empowerment as she intertwines elements of fashion into her work – this unique lens allows Hagai to push visual boundaries.

COMMON AREAS INTERIOR ARTWORK



The Heidies

Live and work in Paris, France

Level 2



pg 29

The Heidies is a collaboration between photographer Pascaline Dargant and artist and dancer Caroline Denervaud, hailing from Geneva and Lausanne, Switzerland, respectively. Conceived in Paris during an impromptu photoshoot in 2014, Dargant began photographing Denervaud rehearsing choreography, giving rise to an altogether new artistic practice for the pair. Working instinctively within a defined framework of time, place and action, The Heidies' work explores gesture and material to extract a moment of delicate balance. They search for the instant when control is lost - a fragile moment of reincarnation. By removing faces, the recognizable becomes transformed, resulting in photographs that aim to trigger the audience to compose their own narratives.

COMMON AREAS INTERIOR ARTWORK



Lani Trock
Lives and works in Los Angeles, CA
Level 2

Lani Trock is a Los Angeles based multidisciplinary artist. Her work investigates the human relationship to nature through photography, sculpture and immersive environmental installations. Her artistic practice is informed by a childhood spent freely exploring the wilderness of Hawaii and California and a nontraditional trajectory into art making. Her work seeks to create environments that are both beautiful and useful; creating educational spaces through the implementation of best new technological practices, and which are built utilizing found, repurposed or readily available materials. The primary objective of her practice is to advocate for the peaceful evolution and spiritual elevation of mankind.



Cheyann Washington
Lives and works in Los Angeles
Level 2

Cheyann Washington is a painter currently working with multiple mediums such as silk paintings, oil paintings, and charcoal. Washington's work explores the connections between the human body and nature, incorporating the motion of the human body with color fields. Washington is influenced by biology and botany, pushing her to conducting studies in these fields. Washington has been modeling since 2018 partnering with creatives and brands alike.



Emily Barletta

Lives and works in Brooklyn

Level 2

Emily Barletta is an artist based in Brooklyn, NY. Through hand embroidery on paper she strives to keep a record of time and the human experience, through the simple act of mark making and the stitch. She received a BFA from the Maryland Institute College, 2003. Barletta received a New York Foundation of the Arts Fellowship in 2009 and Pollock-Krasner Grant in 2011.



Ludwig Favre

Lives and works in Paris

Level 2

pg 37

Ludwig Favre is an artist with a keen awareness for aesthetics and image composition. He travels the world photographing unique building facades, national parks, universities, pristine beaches and cityscapes. His photographic style elevates his subjects so that each reflect a surreal and painter-like quality.

COMMON AREAS INTERIOR ARTWORK



Lilian Martinez

Lives and works in Yucca Valley and Los Angeles

Level 2

Lilian Martinez blends past with present and future, repeatedly employing recognizable imagery, classical architectural elements, and contemporary pop culture references to create the settings for her portraits, landscapes and still lifes. Interested in generating alternate histories where people of color, particularly women of color, are not excluded from cultural narratives typically associated with privilege, Martinez reconciles memory, reality and dreams into scenes that are slightly surreal.

COMMON AREAS INTERIOR ARTWORK



Little Dean

Level 2

Little Dean is fascinated by how different shapes, colors and lines can form endless opportunities. To them, art is so subjective and democratic and the strongest art comes from freedom. Art, like democracy is about freedom of expression, open choice, and diversity of representation. These works are from their print collection.



Kelly Brumfield-Woods
Lives and works in Los Angeles, CA
Rooftop, Level 3



Kelly Brumfield-Woods began her art career in Venice in the mid-1980's, assisting artists like Billy Al Bengston, Charles Christopher Hill, Frank Lloyd and Mary Corse. Her hard-edge geometric paintings, topped with heavy glitter are informed by her interest in architecture, spatial perception and color theory as well as the artists she assisted early in her career. Kelly's glitter paintings shift in color with two different controls: as the daylight changes and as the viewer walks around the artwork.



Pamela Jorden
Lives and works in Los Angeles, CA
Rooftop

Pamela Jorden's paintings encourage a phenomenological experience of painterly space defined by color, mark, composition, and light. In this recent group of paintings, Jorden continues to work onto raw and bleached black linen stretched over circular or idiosyncratically shaped stretcher frames. Washes of color, influenced by gravity, viscosity, and the chance interaction of wet into wet paint, traverse the geometry of the frame as blurred, atmospheric flows. Compositional ruptures in the paintings, as well as fragmented and layered areas of chromatic dispersions, reflect Jorden's interest in the collage of texture and density in the urban landscape of Los Angeles. Lines, like contrails crossing the sky, become multiple horizons as paint moves in many directions through the field of the painting. The irregularly shaped frames disrupt linear perspective offering a subjective viewpoint: from within, looking outwards, in many directions at once.



SCAN TO DISCOVER MORE
FROM THE FIRST ESTABLISHED
CHAMPAGNE HOUSE,
RUINART



Ruinart, the first established champagne house, founded in 1729, has a long shared history with the arts ever since its collaboration with Alphonse Mucha in 1896.

Since then, Ruinart has forged close ties with artists and art institutions alike. Each year, Ruinart invites an artist to reinterpret a part of the House's history through their eyes, and has recently worked with Vik Muniz, Liu Bolin, and Jaume Plensa.

Ruinart's commitment to contemporary arts also comes to life through partnerships with many of the world's most renowned art fairs, including Frieze, Art Basel, TEFAF, the FIAC Paris, Kyotographie, and many more.

